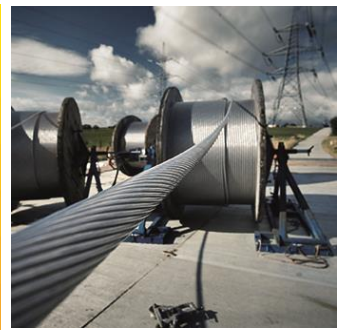


# National Grid's Project Controls Journey



Sanjay Lodhia & Tony Abiad  
Danielle Davies, Perri Hughes & Oliver Kitching

16 November 2017

# Past, Present & Future

- Provide an overview of National Grid's journey
- Established a centralised Project Controls function
- How does it look in the here and now?
- What does the future of Project Controls look like?



# Introduction

---

## PAST

Needs case

Establishing the foundations

Challenges

## PRESENT

Building on foundations

Governance & control framework

Continuous improvement cycle

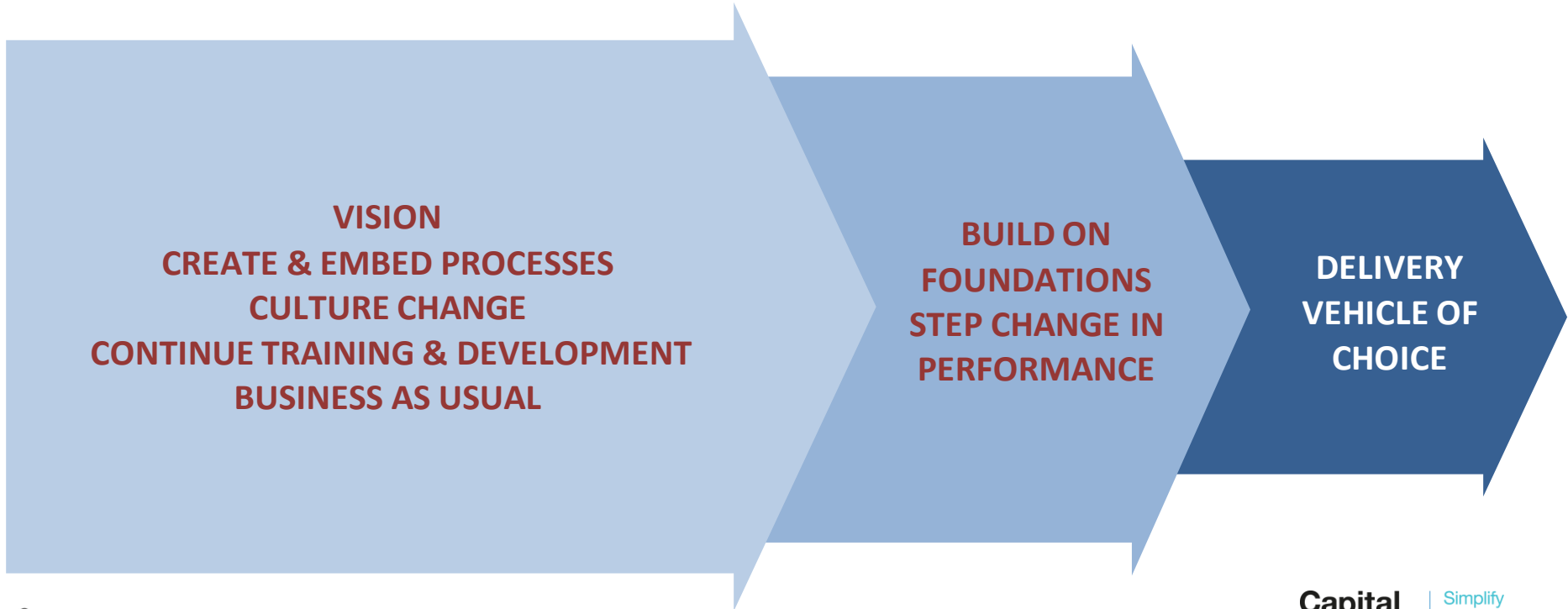
## FUTURE

Future areas of focus

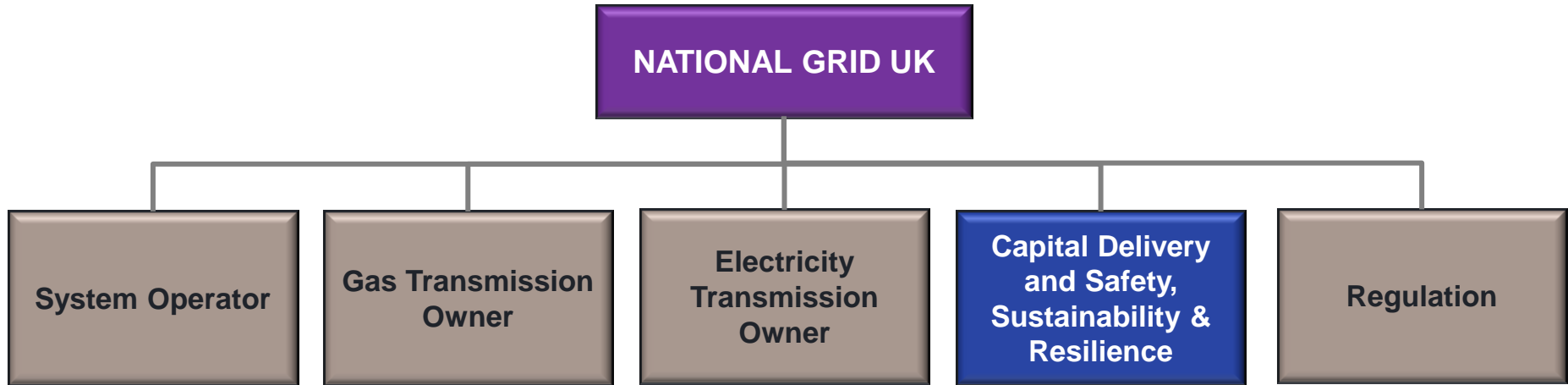
The next generation

Structured development

# NATIONAL GRID - PROJECT CONTROLS MATURITY

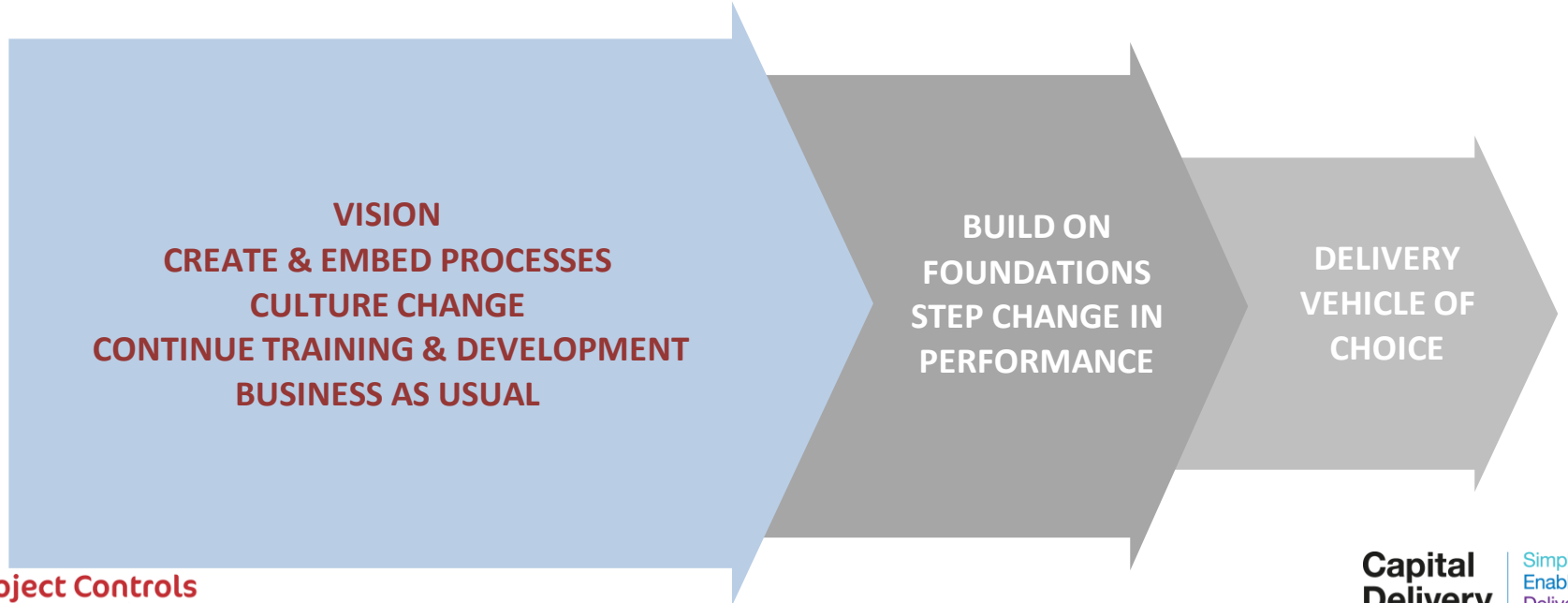


# National Grid UK



# Past, Present & Future

## NATIONAL GRID - PROJECT CONTROLS MATURITY



# Needs Case

## REGULATORY CHANGE

- Demonstrate and focus on value
- Introduction of RIIO – output based agreement
- Demand for transparency

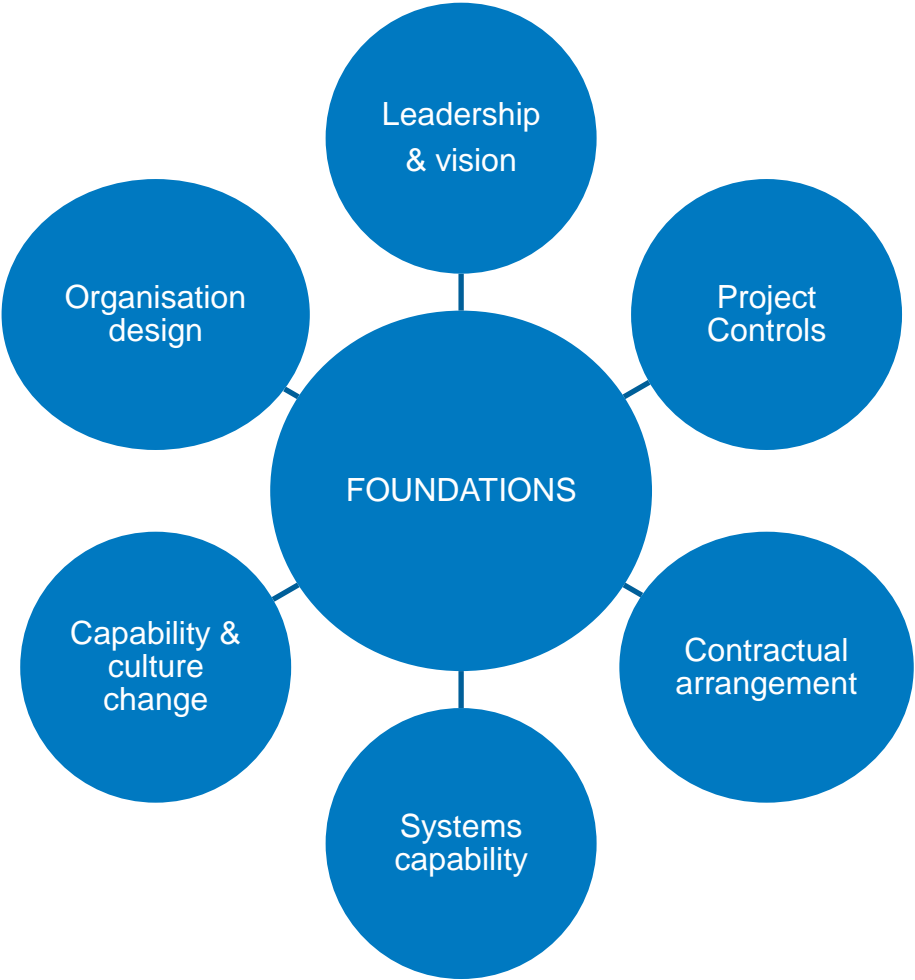
## INDUSTRY CHANGE

- Changing electricity market
- Demand forecasts
- Competition

## ENHANCE POSITION

- Enhance National Grid's reputation
- Demonstrate value
- Maintain shareholder confidence

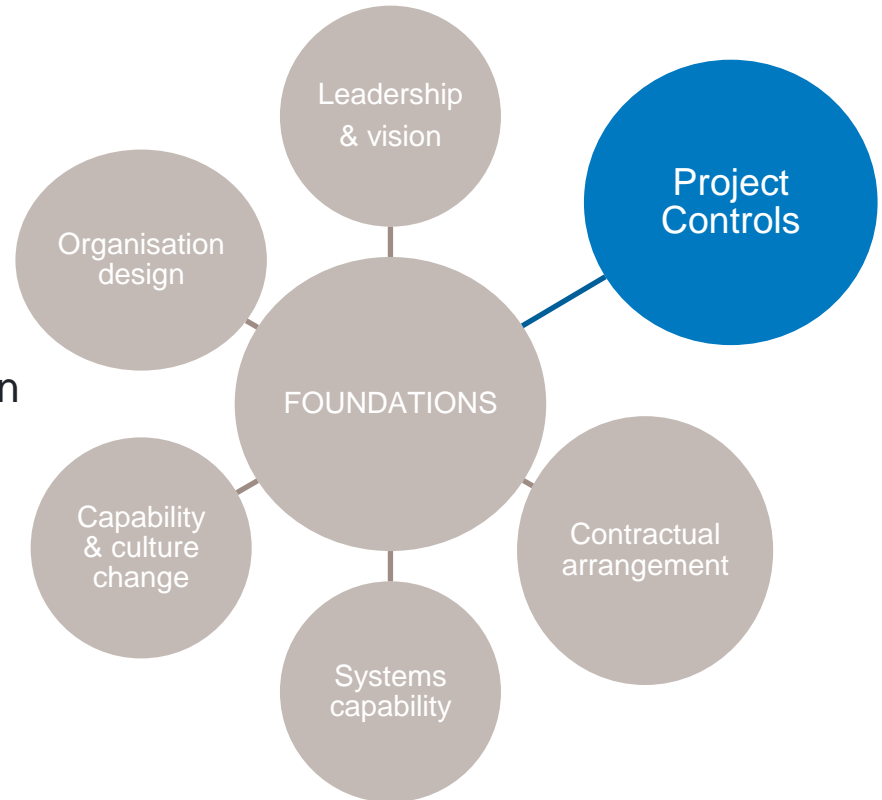






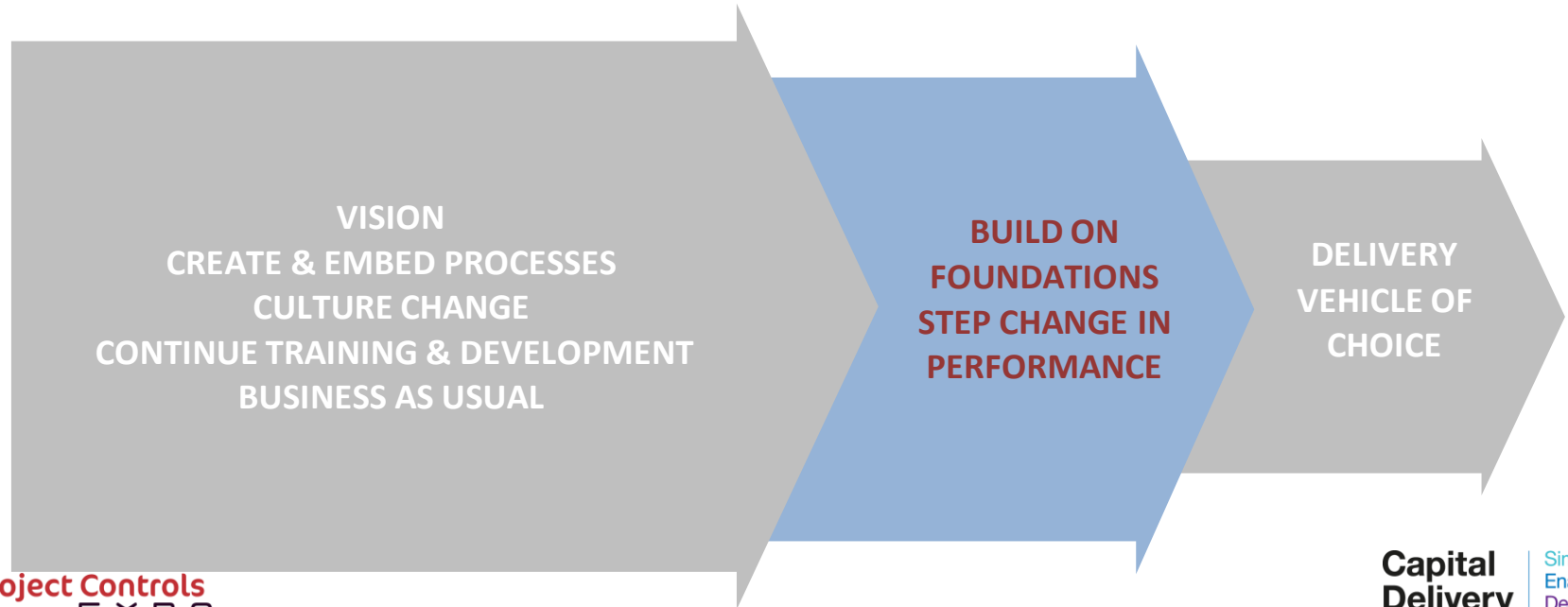
# The foundations of Project Controls

- Trust
- Estimating Hub
- Planning Team
- Cost Engineering function
- Change Control & Governance
- Standardised management information
- Reporting team
- System configuration
- Reporting calendar
- Contractual arrangements
- Training & support



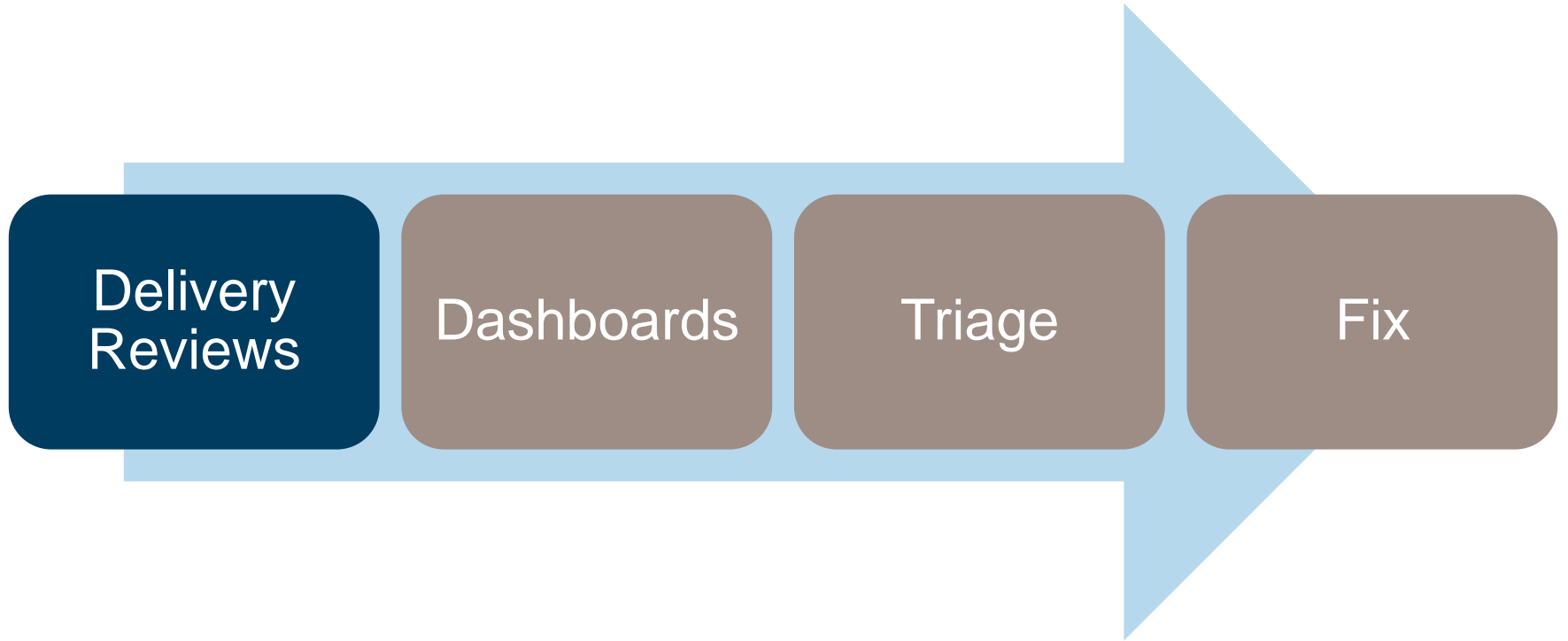
# Past, Present & Future

## NATIONAL GRID - PROJECT CONTROLS MATURITY

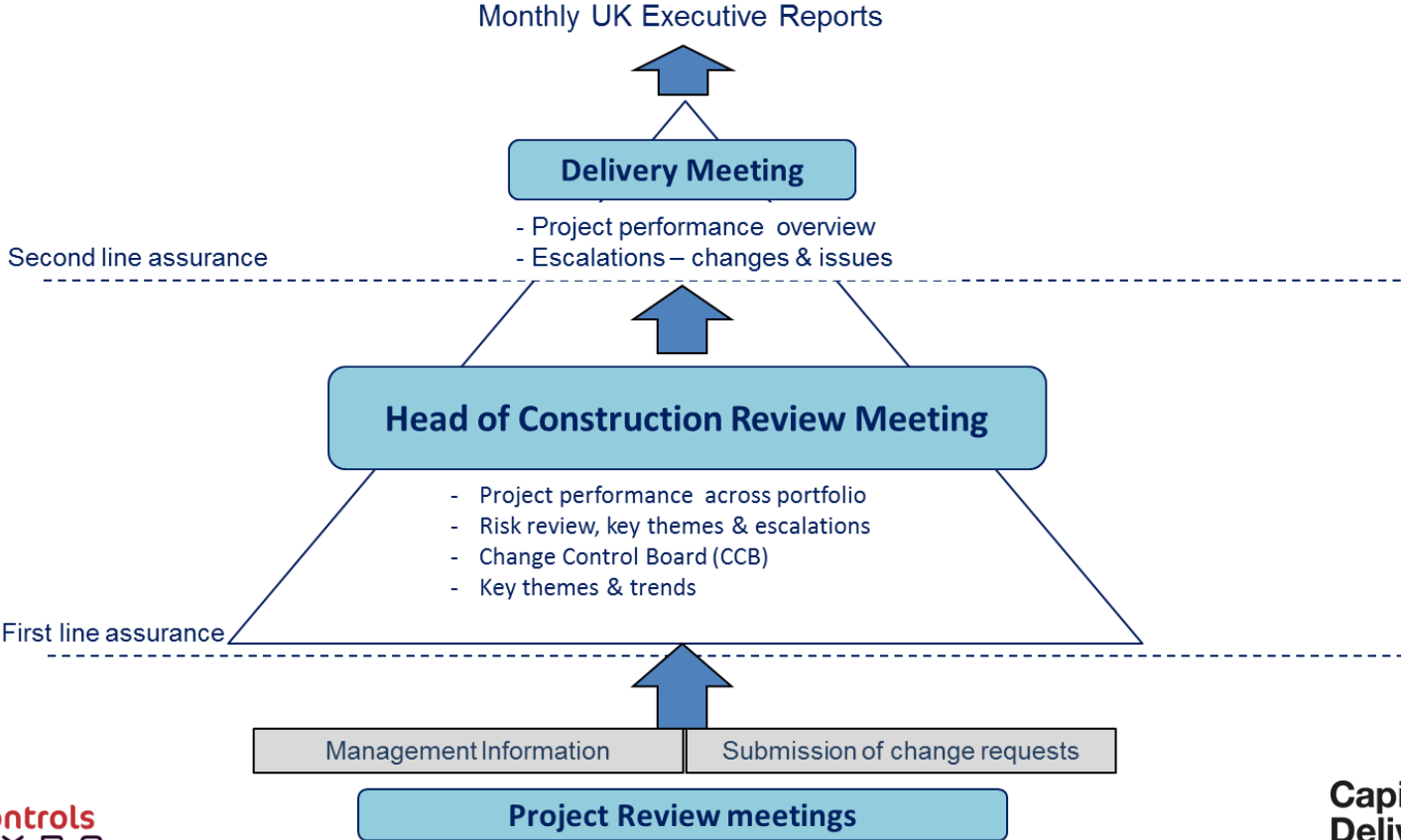


# Stage 1 – Basic control & governance

---

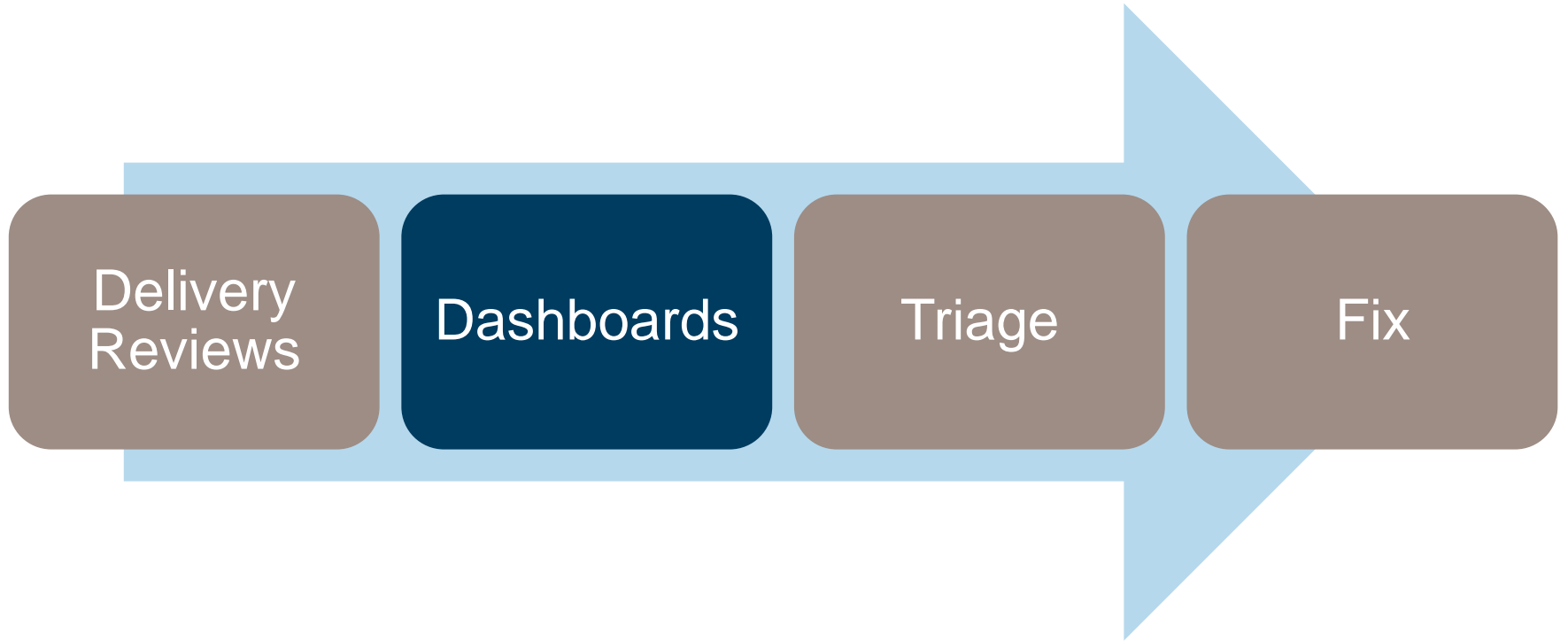


# Project Delivery Review Framework



# Stage 1 – Basic control & governance

---



# Dashboards

Project Control Dashboard
Home Catalog Favorites Dashboards

Project Control Summary
PoP (Project on Page)
Governance

**STRICTLY CONFIDENTIAL**

1. Financial Year: 2016-2017 2. Financial Period: 9

**Capital Delivery Portfolio**

**100**

No. of Projects

Cumulative SPI

**0.95**

Schedule Performance Indicator

Cumulative CPI

**0.93**

Cost Performance Indicator

Critical Ratio

**0.88**

(Cumulative CPI \* SPI)

**44%**

% Complete

**44**

Change Control Count

**Exec External Links**

[Workbook and Resource Analysis](#)

**Performance Threshold (CPI)**

<0.90 >=0.90 and <0.98 >= 0.98

**Performance Threshold (SPI)**

<0.90 >=0.90 and <0.97 >= 0.97

**Critical Ratio**

<0.81 >=0.81 and <0.95 >= 0.95

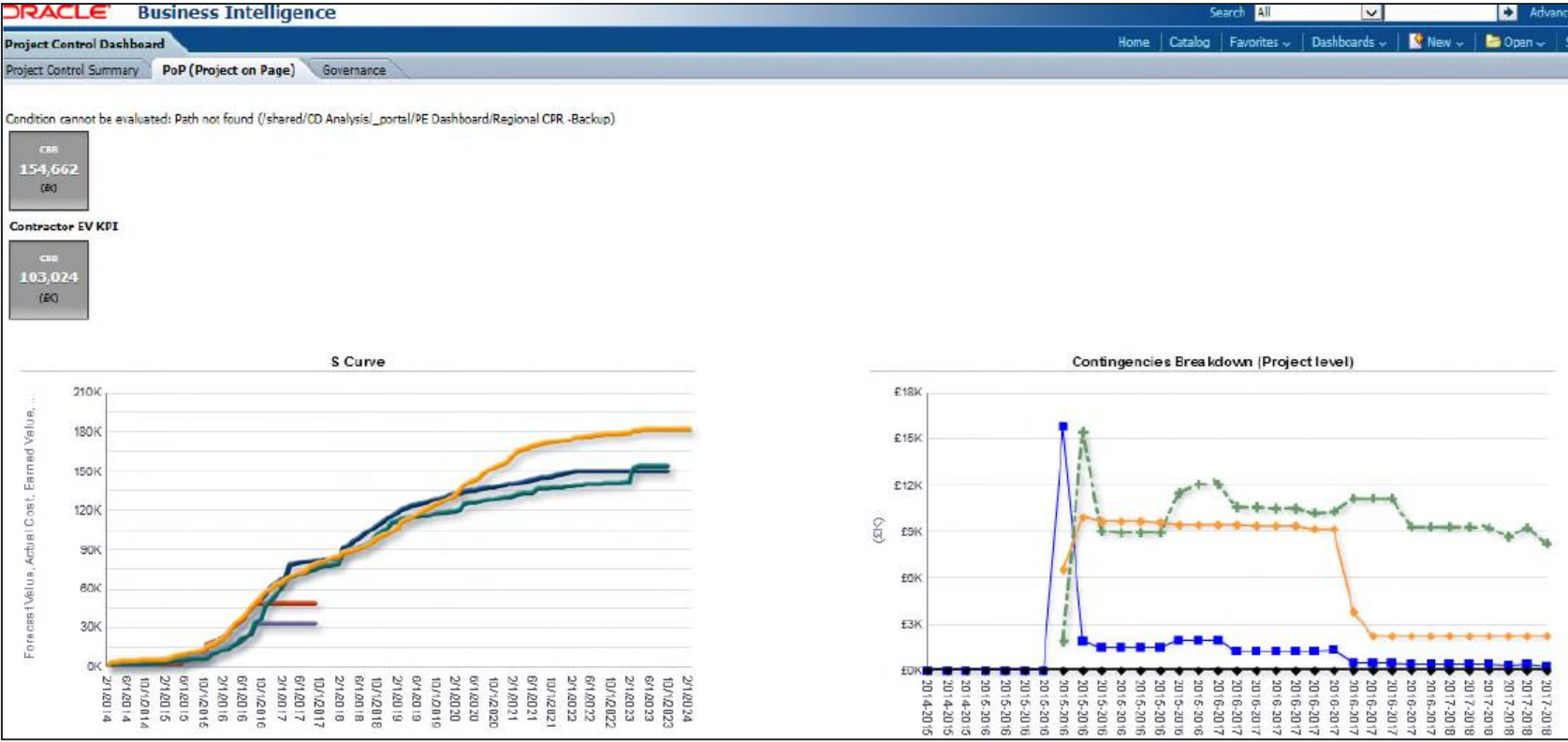
**Variance**

>0 <0

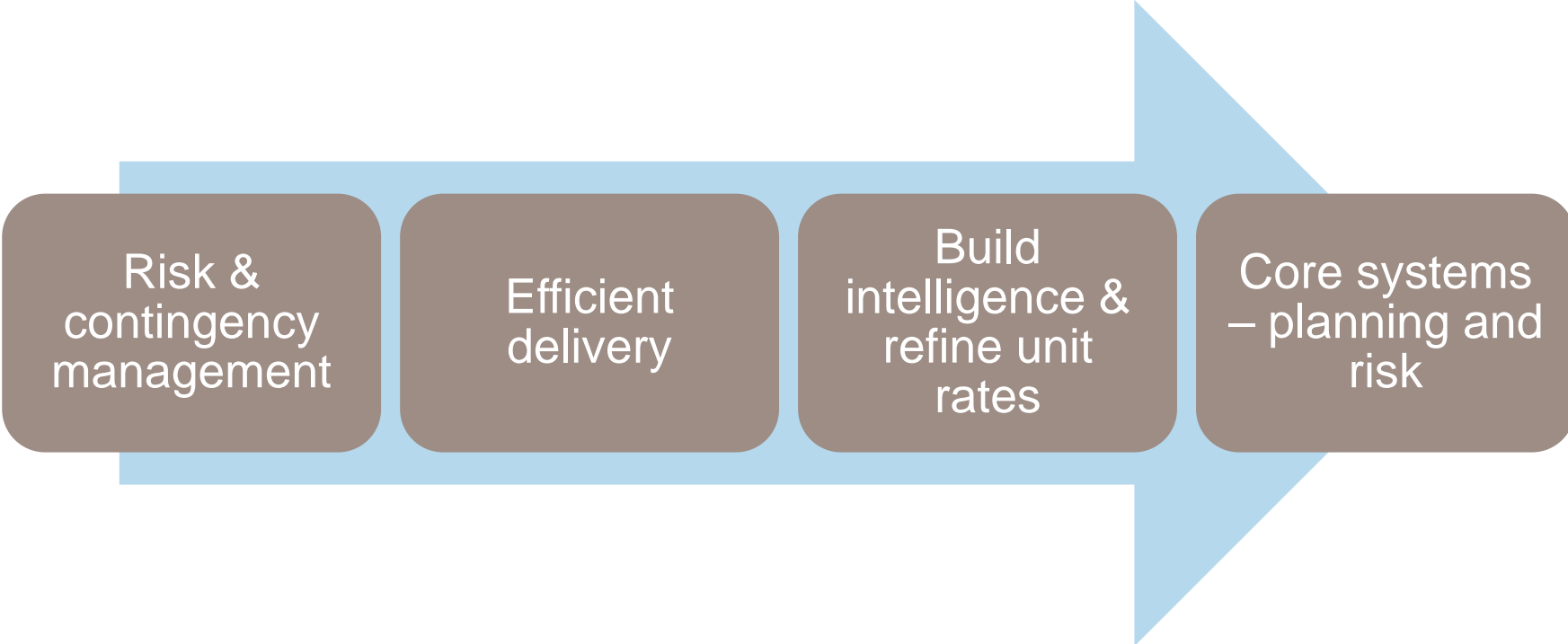
**Overall Performance Report Summary**

1. Financial Year	2. Financial Period	Number of Projects	Cumulative Actual Cost (£k)	Cumulative Schedule Performance Indicator	Cumulative Cost Performance Indicator	Critical Ratio (Cumulative CPI * SPI)	Current Baseline Budget (£k)	Estimated Cost to Complete (£k)	Previous Estimated Cost to Complete (£k)	Estimated Cost to Complete Variance (£k)	Variance ECC to CBB (£k)	Upper Sanction Value (£k)	Variance ECC to Sanction (£k)	% Complete
2016-2017	6	100	1,009,027	0.95	0.93	0.88	2,093,444	2,018,020	1,967,486	50,534	-75,424	2,208,098	-190,077	44%

# Dashboards – ability to drill down

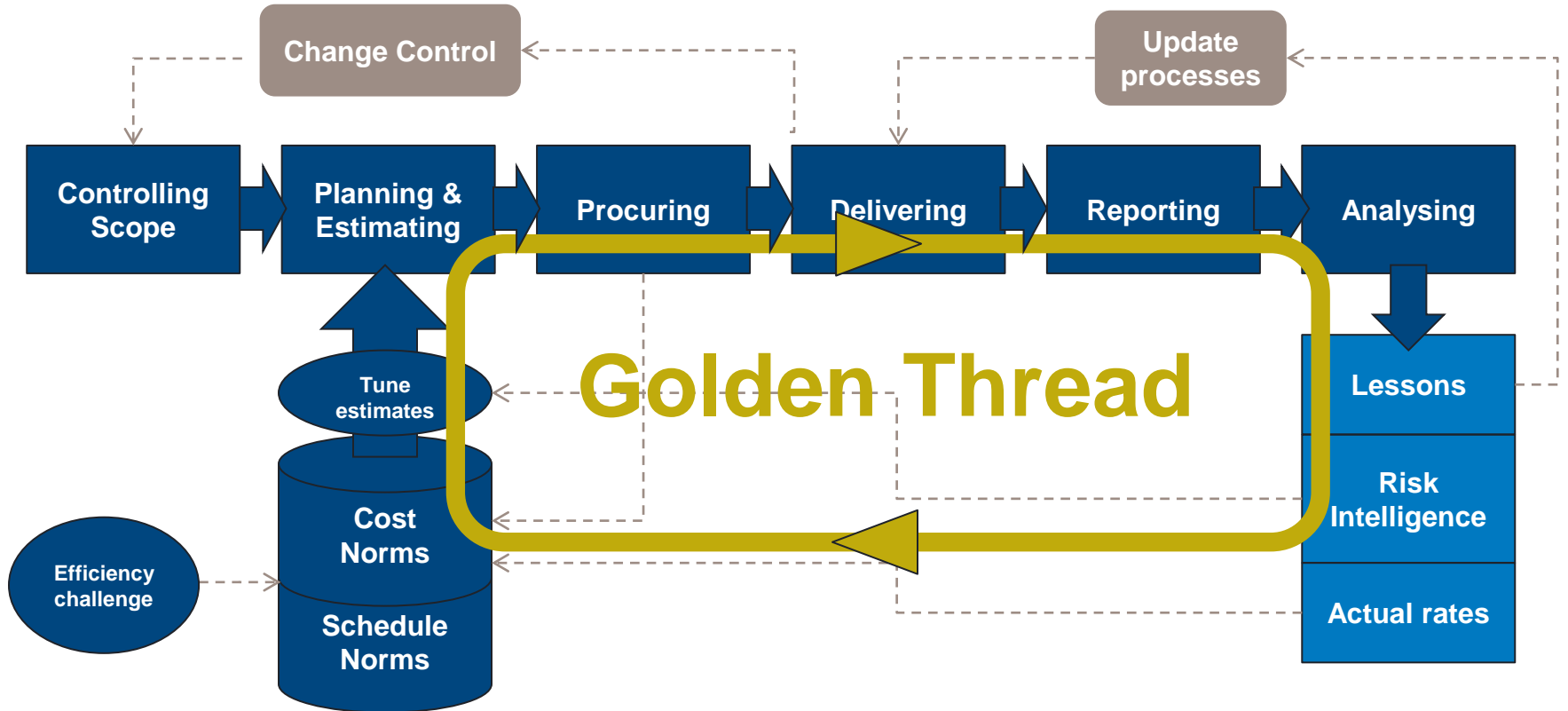


# Stage 2 - Efficiency

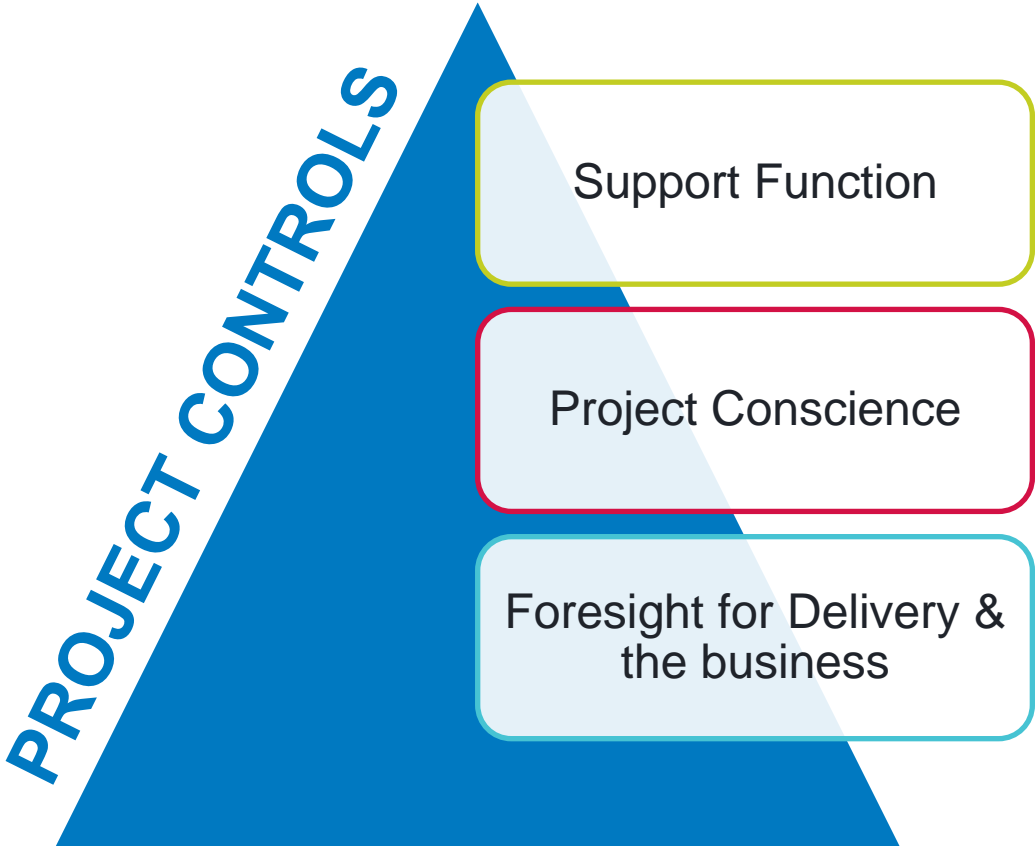




# Golden Thread – Continuous Improvement

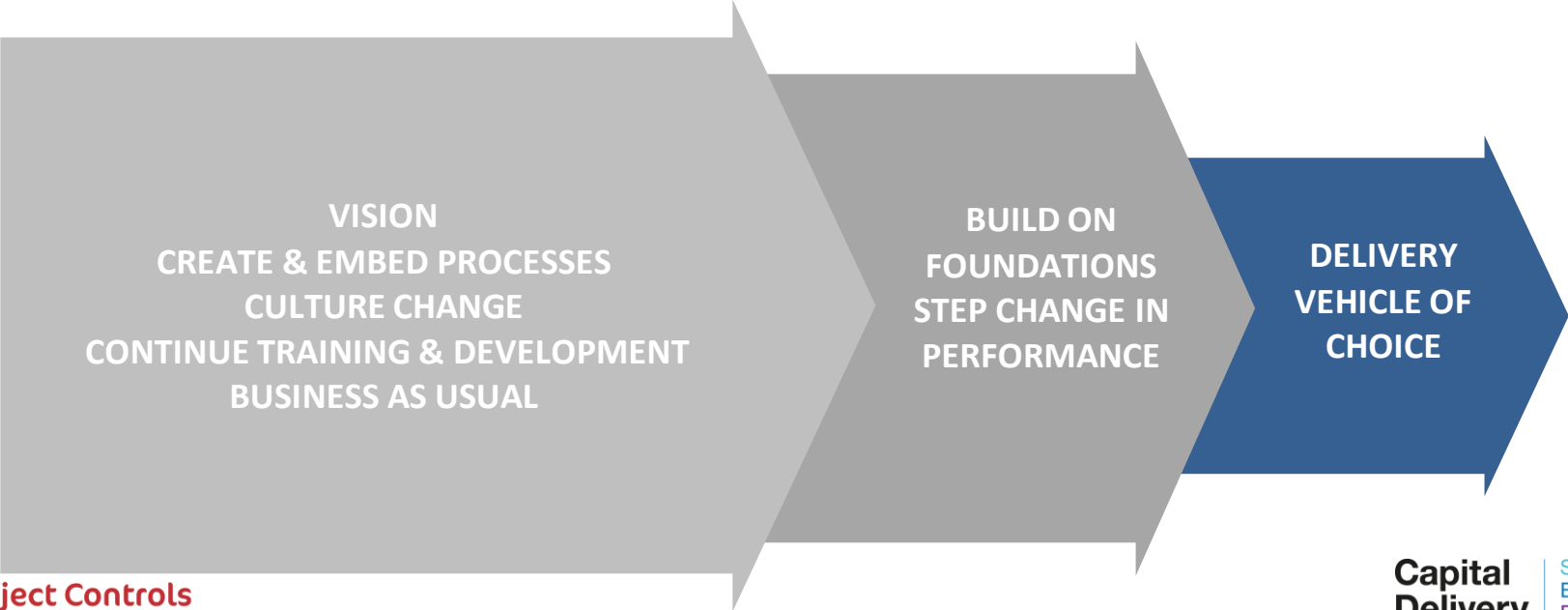


# Collaborative Mandate

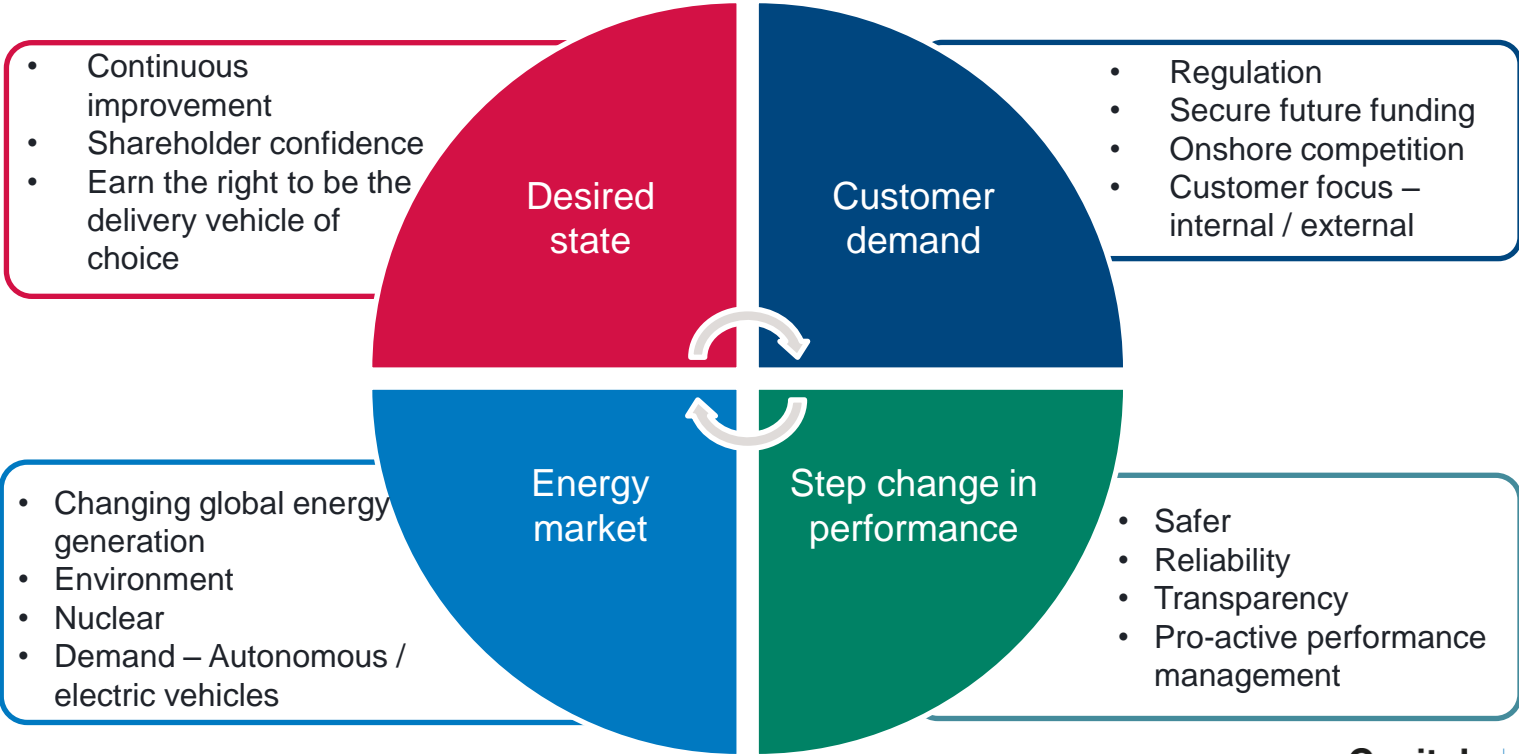


# Past, Present & Future

## NATIONAL GRID - PROJECT CONTROLS MATURITY



# Why change?



# What are we doing?



# How does this benefit us?

P6

Eclipse

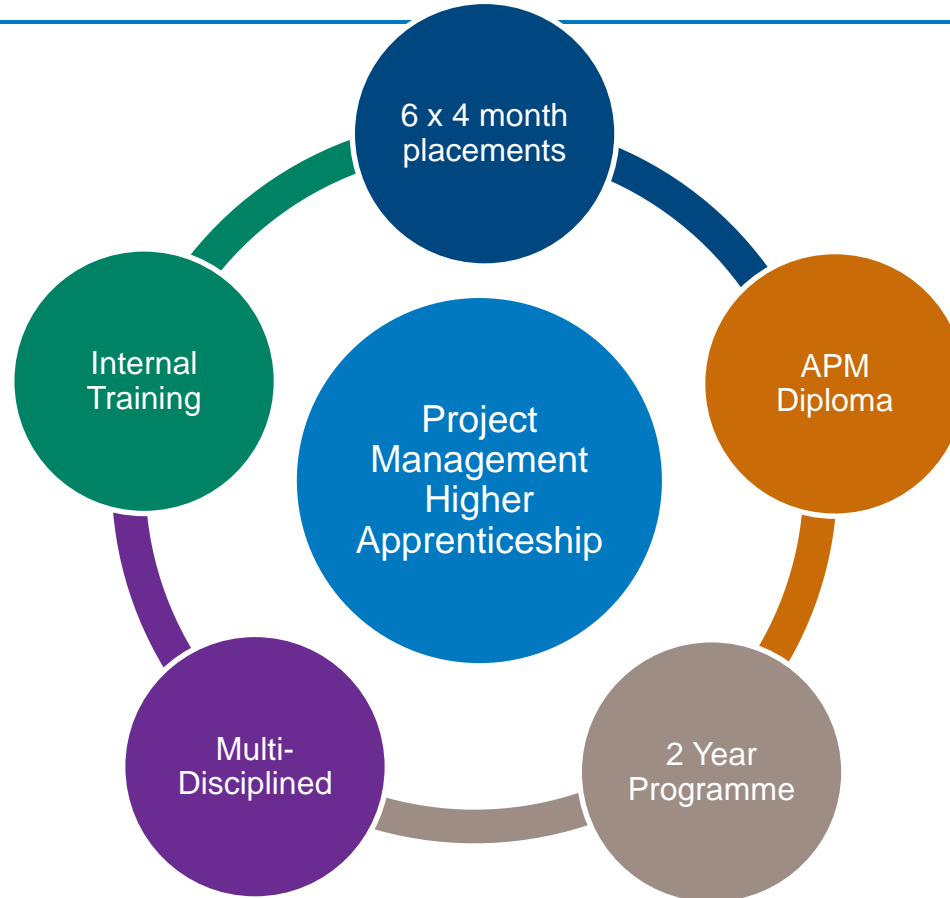
Risk

Golden  
Thread

People

Training

# Higher Apprenticeship Scheme



# Summary



Bring  
Energy  
to Life

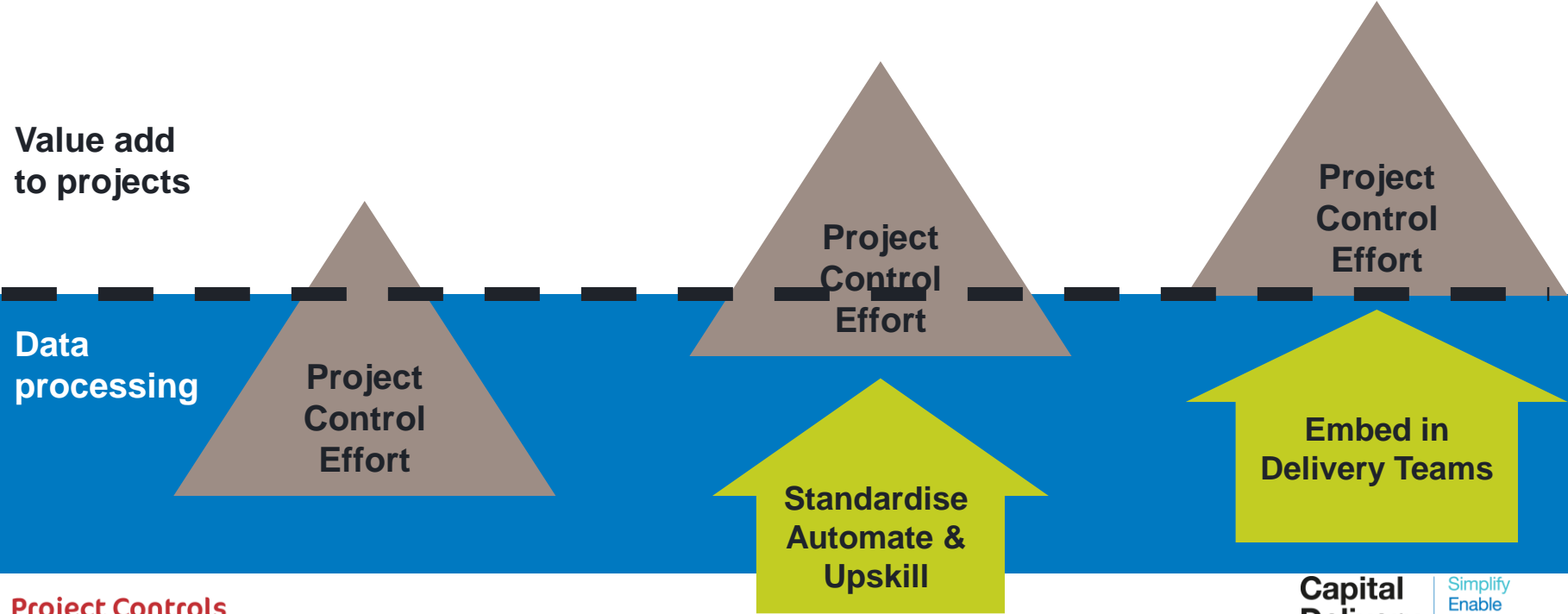




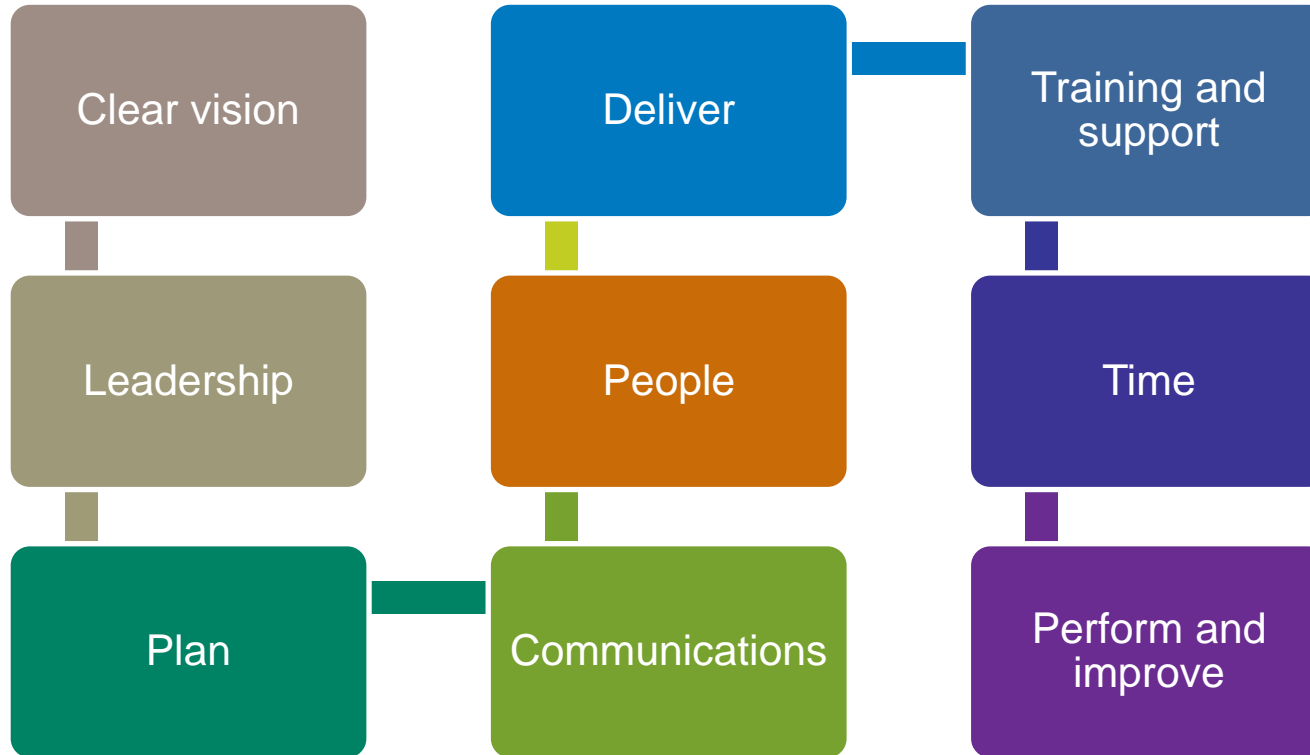
# Summary

Dec 16 – Dec 17	Jan 18 – Dec 18	Jan 19 – Dec 19	Jan 20 – Dec 20
-----------------	-----------------	-----------------	-----------------

Value add to projects



# The Journey



national**grid**